

MONCK STREET



3 Monck Street
London
SW1P 2FA

MEDICAL SPACE TO LET IN THE HEART OF VICTORIA

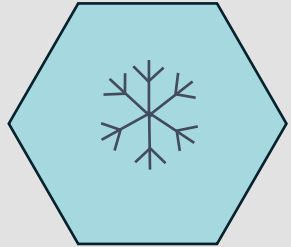
MEDICAL SPACE TO LET

Located in the Victoria/ St James Park area, this 1,450 sq. ft. medical space is fully fitted out for health-care use. With excellent transport connections and situated in a thriving commercial hub, it offers a convenient and accessible setting for medical professionals and patients alike.

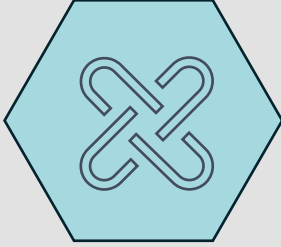


3 Monck Street, London, SW1P 2FA

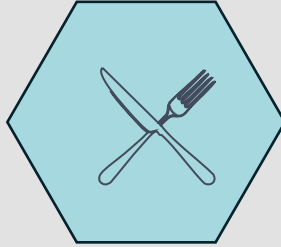




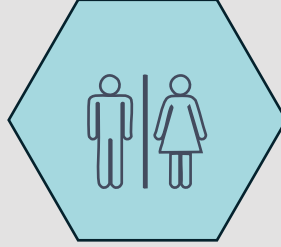
Air Conditioning



4 fitted medical/
consulting rooms



Fitted Kitchenette



W/C facilities

OPTIMISED FOR MEDICAL PRACTICES

The space, located on the ground floor with double frontage on Monck Street, is currently fitted for medical use, featuring a reception area, four medical treatment rooms with air conditioning units, W/C facilities, and a kitchenette.

Its high visibility and accessibility make it an excellent choice for a variety of uses, including medical, dental, retail, office, or professional services, offering prime location and versatile functionality in a bustling area.



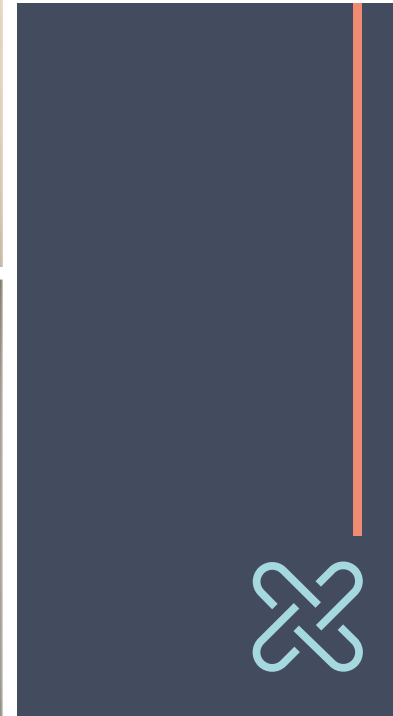
Laser safety

- please make sure you are wearing laser safety eyewear before proceeding with calibration or treatment.
- check the label on the eyewear matches that of the laser being used.
- when treating the face or neck it is mandatory for blackout goggles to be worn.
- do not remove eyewear until instructed to.



1,450 SQ. FT. GROUND FLOOR MEDICAL SPACE



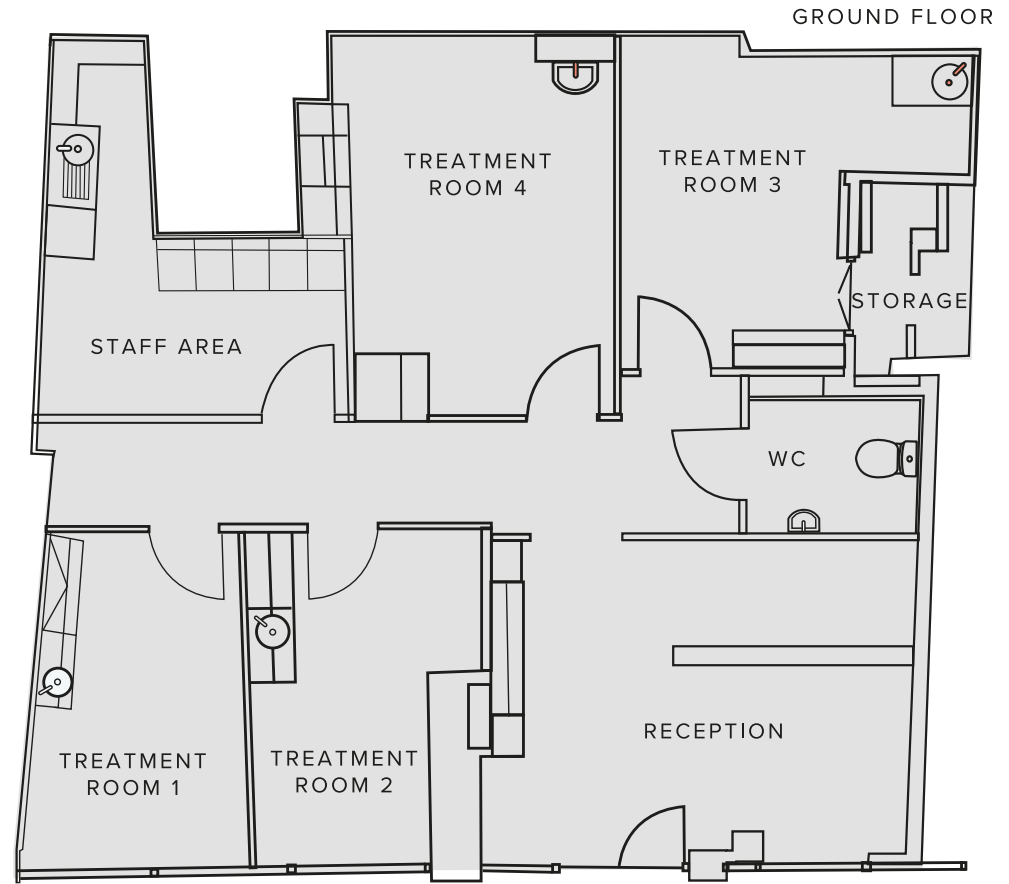


MEDICAL SPACE READY FOR CUSTOMISATION

The treatment rooms are private and designed with a neutral colour scheme, creating a calm and professional environment. Each room is fitted with simple, modern storage solutions to ensure an organised and efficient space. The lighting is appropriately placed to provide a well-lit, comfortable atmosphere for both practitioners and patients. Additionally, the rooms are equipped with strategically located utilities to accommodate various medical equipment and devices, ensuring practicality and ease of use.



AVAILABLE WITH READY MADE TREATMENT ROOMS



FLOOR	SQ. FT.	SQ. MT
GROUND	1,450	134.7

MONCK STREET

A VIBRANT AND DYNAMIC SETTING

The area surrounding Monck offers a range of amenities, including high-end dining, a variety of shops, and essential services. As a central location with high foot traffic, Victoria and St. James's Park attract a steady stream of professionals, residents, and visitors, offering excellent potential for visibility and clientele. Its proximity to key governmental institutions, international organisations, and financial hubs, along with a concentration of other medical and healthcare facilities in the area, makes it an exceptional choice for medical professionals seeking a practice or clinic space.



AMAXA PHARMACEUTICAL GT PETER ST
JUST OFF MONCK STREET

CARDINAL PLACE



VICTORIA STREET



ANGEL DENTAL MONCK STREET



CARDINAL PLACE



THE IVY VICTORIA



LITTLE BEN VICTORIA



ST JAMES PARK





WITHIN EASY REACH

- ⬡ Horseferry Car Park 2 min walk

- ⬡ St James Park ⦿ ⦿ 7 mins walk

- ⬡ Westminster Tube Station ⦿ ⦿ ⦿ 11 mins walk

- ⬡ Victoria Station ⦿ ⦿ ⦿ 🚏 15 mins Walk

The property is ideally situated just a short distance from St. James's Park Underground Station, Victoria Station and Westminster Station, offering excellent access to the London Underground, National Rail services, and bus routes. This prime transport connectivity ensures seamless travel for both patients and staff, with easy access to the wider city and beyond. The property is also within walking distance of several world-famous landmarks, including Buckingham Palace, Westminster Abbey, and the Houses of Parliament.



SEAMLESS CONNECTIVITY

WELL CONNECTED PRIME LOCATION.



This well-established healthcare hub offers excellent opportunities for networking, referrals, and collaboration, while also attracting patients who value the convenience of being in a healthcare cluster. Neighbours include The Belgravia Centre, Premier Laser & Skin clinic and West Fertility Clinic Associates.

1. PREMIER LASER & SKIN CLINIC
2. THERAPIE CLINIC- VICTORIA
3. THERAPIE CLINIC- BELGRAVIA
4. WE LASER CLINIC
5. VICTORIA AESTHETICS BEAUTY
6. ST JAMES BEAUTY
7. THE HAIR LOSS CENTR
8. BELGRAVIA CENTRE
9. MADE IN LONDON DENTAL
10. VICTORIA DENTAL CENTRE
11. WILTON DENTAL PRACTICE
12. HERMES DENTAL CLINIC
13. THE DENTAL IMPLANT GROUP
14. EGO DENTAL
15. ANGEL DENTAL
16. BUCKINGHAM GATE ORTHODONTICS
17. THE MALE FERTILITY CLINIC- LONDON
18. WEST FERTILITY CLINIC ASSOCIATES
19. ROODLANE MEDICAL- VICTORIA STATION
20. VICTORIA MEDICAL STATION



CONTACT



ASHLEY MEDWAY BSc (Hons) MRICS

COMMERCIAL AGENT

T: 0207 043 0111

M: 07812 205327

E: ashley@medwayandlaw.co.uk



Oliver Clift

COMMERCIAL AGENT

T: 0207 043 0111

M: 07468431024

E: Oliver@medwayandlaw.co.uk



MEDWAY & LAW
CHARTERED SURVEYORS

www.medwayandlaw.co.uk

20 HANOVER STREET, MAYFAIR, LONDON, W1S 1YR

TERMS

Lease Terms

The premises is available by way of a new lease direct from the landlord.

Floor Areas

1,450 sq. ft./ 134.7 sq. mtr

Passing Rent

£65,000 per annum

Rates payable

£29,500 per annum

Service Charge

TBC

3 Monck Street
London
SW1P 2FA

Misrepresentation act 1967

These particulars are intended only to give a fair description of the property and do not form the basis of a contract or any part thereof. The descriptions, dimensions and all other information are believed to be correct but their accuracy is in no way guaranteed.